

# ZIPCodeWorld™

## Store Locator .NET User Guide

Developed by Hexasoft Development Sdn. Bhd.  
Copyright © 2001-2006 ZIPCodeworld.com. All Rights Reserved.

Visit our Web site at  
<http://www.zipcodeworld.com>

## INTRODUCTION

**ZIPCodeWorld™ .NET Store Locator** is web server software that allows website owner to install a robust and fast zip code locator system on their own website written in ASP.NET. The installation of Store Locator .NET control is as easy as drag and drop in the Visual Studio environment. Developers can enable Store Locator service in their websites in less than 10 minutes.

**ZIPCodeWorld™ .NET Store Locator** allows your visitors to search for store locations, dealers, members, outlets, hotels, ATMs or anything else you can think of, just by entering their zip code. Your visitors simply enter their zip code, and our software will return proximity matches, links to MapQuest®/Yahoo®/Google® for maps and driving directions, contact info, links and more for each record that is closest to them.

**ZIPCodeWorld™ .NET Store Locator** control queries the ZIPCodeWorld™ United States ZIP Code or PostalCodeWorld™ Canada Postal Code database to lookup the distance by latitude and longitude. No external Internet connection required to execute this control on server or LAN.

## SYSTEM FEATURES

**ZIPCodeWorld™ .NET Store Locator's** features:

1. Support ASP.NET 1.1+
2. Drag and Drop ASP.NET Control
3. Fully Customizable Interface
4. Secure Admin Control Panel
5. Limit Results by Radius and Records
6. Display General Store Details and Custom Fields
7. Sort Results by Distance, Names and City
8. Free Latitude and Longitude Database (for Year 2000)
9. Support Canada Postal Code
10. Bulk Store/Dealer Batch Import
11. Support Location Maps & Directions
12. Support Miles and Kilometers Measurement
13. Support Preferred Stores

## SYSTEM REQUIREMENTS

This section describes the minimum configuration requirements for a computer where the .NET Framework redistributable package is to be installed. If the minimum requirements are not met, ZIPCodeWorld™ Store Locator might not be working properly. Specifically, note that you cannot install the .NET Framework redistributable package on a computer running the Microsoft® Windows 95 operating system.

## Minimum Platform Requirements

- ✓ Microsoft® Windows 98
- ✓ Microsoft® Windows 98 Second Edition
- ✓ Microsoft® Windows Millennium Edition (Windows Me)
- ✓ Microsoft® Windows NT 4 (Workstation or Server) with Service Pack 6a
- ✓ Microsoft® Windows 2000 (Professional, Server, or Advanced Server) with the latest Windows service pack and critical updates available from the Microsoft Security Web site.
- ✓ Microsoft® Windows XP (Home or Professional)
- ✓ Microsoft® Windows Server 2003 family

## Minimum Configuration Requirements

Scenario	CPU Required	RAM Required
Client	Pentium 90 MHz*	32 MB**
Server	Pentium 133 MHz*	128 MB**

\* Or the minimum CPU required running the operating system, whichever is higher.

\*\* Or the minimum RAM required running the operating system, whichever is higher.

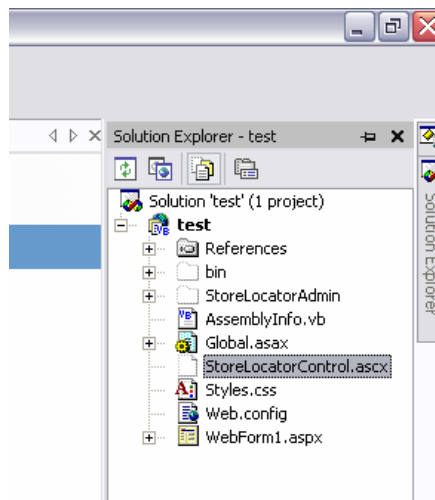
# INSTALLATION GUIDE

## Download Setup File

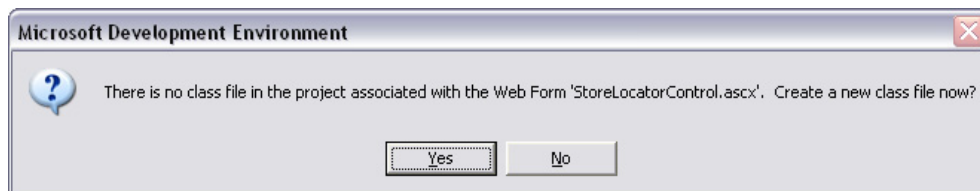
- i. Download the Store Locator Installation File from Web site  
[http://www.zipcodeworld.com/samples/ZIPCodeWorld\\_Store\\_Locator\\_Dot\\_Net.ZIP](http://www.zipcodeworld.com/samples/ZIPCodeWorld_Store_Locator_Dot_Net.ZIP)
- ii. Extract ZIPCodeWorld\_Store\_Locator\_Dot\_Net.ZIP to your web application folder

## Add Control to Project

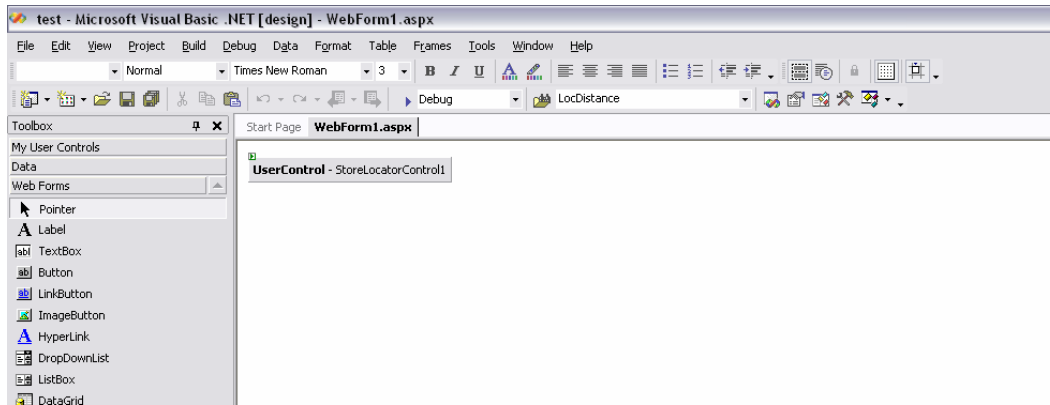
- iii. Open your application solution file by Microsoft® Visual Studio
- iv. Select your project and click show all files button at solution explorer



- v. Right click StoreLocatorControl.ascx and select "Include in project"
- vi. The system will prompt a message to create new class file and click No



- vii. Open the page you wish to include StoreLocator control
- viii. Drag StoreLocatorControl.ascx and drop at the page
- ix. You will see the screen as below.



## Configuring Database Connection

- x. Open Web.Config
- xi. Add either ODBC-DBQ or ODBC-DSN to Web.Config after </system.web> tag. Remember to update the database path or DSN in order to connect to the databases correctly

ODBC – DBQ (Database access through File Path)

You may change the database folder, but remember to point the database path correctly in the Web.config.

```
<appSettings>
  <add key="strConnType" value="Access"/>
  <add key="StrConnZipCodeWorld" value="Driver={Microsoft Access Driver (*.mdb)}; Dbq=[your database path]\\ZIPCOWORLD-PREMIUM.MDB;Uid=;Pwd=";"/>
  <add key="StrConnStoreLocatorAccess" value="Driver={Microsoft Access Driver (*.mdb)}; Dbq=[your database path]\\StoreLocator.mdb;Uid=;Pwd=";"/>
</appSettings>
```

ODBC – DSN (Database access through Data Source Name)

You need to create System DSN and ODBC Data Source for the following files:

- a) ZIPCOWORLD-PREMIUM.MDB
- b) StoreLocator.mdb

```
<appSettings>
  <add key="strConnType" value="Access"/>
  <add key="StrConnZipCodeWorld" value="DSN=ZipCodeWorld;Uid=;Pwd=";"/>
  <add key="StrConnStoreLocatorAccess" value="DSN=StoreLocator;Uid=;Pwd=";"/>
</appSettings>
```

## MySQL

```
<appSettings>  
  <add key="strConnType" value="MySql"/>  
  <add key="StrConnZipCodeWorldMySQL" value="DRIVER={MySQL ODBC 3.51  
Driver};SERVER=vios;DATABASE=zipcodeworld;USER=[User Name];PASSWORD=[Your  
Password];OPTION=3;"/>  
  <add key="strConnStoreLocatorMySQL" value="DRIVER={MySQL ODBC 3.51  
Driver};SERVER=vios;DATABASE=storelocator;USER=[User Name];PASSWORD=[Your  
Password];OPTION=3;"/>  
</appSettings>
```

## Micorsoft SQL Server

```
<appSettings>  
  <add key="strConnType" value="MsSql"/>  
  <add key="StrConnZipCodeWorldMsSQL" value="Data Source=127.0.0.1;Initial Catalog=zipcodeworld;User  
Id=[User ID];Password=[Your Password];"/>  
  <add key="strConnStoreLocatorMsSQL" value="Data Source=127.0.0.1;Initial Catalog=storelocator;User  
Id=[User ID];Password=[Your Password];" />  
</appSettings>
```

# USAGE GUIDE

## Admin Control Panel

Log to [http://localhost/<your\\_application\\_path>/StoreLocatorAdministrator/login.aspx](http://localhost/<your_application_path>/StoreLocatorAdministrator/login.aspx)

### 1. Login Page

**Login**

**User Name\***

**Password\***

- i. Enter User Name (default as admin)
- ii. Enter Password (default as 12345)
- iii. Click Login button

**\*Note: User name and password is required field. Default user name is "admin" and password is "12345".**

### 2. Admin Control Panel

**ZIPCodeWorld™**  
Store Locator System

**Admin Control Panel**

Home  
Store Locator Preview  
Logout

**Program Maintenance**

- Program Configuration
- Store/Dealer Admin
- Import Stores
- Import ZipCodeWorld
- User Control

**Support**  
ZIPCodeWorld.com

**Welcome admin,**

<b>Total Store</b>	10
<b>Visible Store</b>	10
<b>Hidden Store</b>	0
<b>Preferred Store</b>	0

**Quick Start Guide**

- 1) Configure Store Locator Application Settings  
["Program Configuration"](#)
- 2) Add Stores  
["Store/Dealer Admin"](#) or ["Import Stores"](#)
- 3) Preview and Store Locator Testing  
["Store Locator Preview"](#)
- 4) Insert HTML Code into Web page  
["HTML Code"](#)

The admin control panel shows summary of total store, visible store, hidden store and preferred store.

### 3. Store Locator Preview

- Basic Search

Hexasoft Sdn. Bhd.

ZIP Code\*

Search within  kilometers

Number records display

[Advanced Search](#)

- Enter ZIP Code you wish to query
- Select the range of radius
- Select max number of records display (if enable)
- Click "Go" button to get search results

- Advanced Search

Hexasoft Sdn. Bhd.

City

State

Number records display

[Basic Search](#)

- Enter City and State you wish to query
- Select maximum number of records display
- Click Go button to get search results

- Search Results

Sort By:

Stores	Distances
<b>Holbrook-Sun-Vet</b> Sun-Vet Mall - 6801 Sunrise Hwy Holbrook NY 11741 US Tel No: (631) 580-0995	3.13 kilometers <a href="#">Show Map</a>
<b>East Patchogue-Montauk</b> 751 Montauk Hwy Patchogue NY 11772 US Tel No: (631) 654-8733	13.37 kilometers <a href="#">Show Map</a>
<b>Commack-Veteran Hwy</b> 40 Veteran Hwy Commack NY 11725 US Tel No: (631) 499-8932	19.98 kilometers <a href="#">Show Map</a>
<b>City Monticue Sp S/F</b>	

### 4. Logout

- When you click logout button, the system will show you a logout message and you will redirect to default login page after 5-second.

## 5. Program Configuration

- General Application Setting

Configuration	
General Settings	
Organization Email Address:	<input type="text" value="webmaster@storelocator.com"/>
Organization Name:	<input type="text" value="Store Locator"/>
Heading Text:	<input type="text" value="Hexasoft Sdn. Bhd."/>
Default Search Radius:	<input type="text" value="50"/> kilometers
Default Max Record:	<input type="text" value="10"/>
Measurement:	<input type="text" value="kilometers"/>

- Enter your organization email address
- Enter your organization name
- Heading Text will display at top of the client page (blank to disable)
- Select default search radius for end-user
- Select default maximum record for end-user
- Select default measurement (miles and kilometers) for end-user

- Customize Search Fields

Customize Fields	
Store Header Text	<input type="text" value="Stores"/>
Distance Header Text	<input type="text" value="Distances"/>
ZIPCode:	<input checked="" type="checkbox"/>
Name:	<input checked="" type="checkbox"/>
Address1:	<input checked="" type="checkbox"/>
Address2:	<input checked="" type="checkbox"/>
City:	<input checked="" type="checkbox"/>
State:	<input checked="" type="checkbox"/>
Country:	<input checked="" type="checkbox"/>
Tel No:	<input checked="" type="checkbox"/>
Fax No:	<input checked="" type="checkbox"/>
Email Address:	<input checked="" type="checkbox"/>
Website URL:	<input checked="" type="checkbox"/>
Custom Field 1:	<input type="checkbox"/>
Custom Field 2:	<input type="checkbox"/>
Custom Field 3:	<input type="checkbox"/>
Custom Field 4:	<input type="checkbox"/>
Custom Field 5:	<input type="checkbox"/>

- Enter store default header text
- Enter distance default header text
- Enable or disable ZIP code column
- Enable or disable store name column
- Enable or disable address 1 column
- Enable or disable address 2 column
- Enable or disable city column
- Enable or disable state column
- Enable or disable country column
- Enable or disable telephone number column
- Enable or disable fax number column
- Enable or disable email address column
- Enable or disable website URL column
- Enable or disable custom field 1 column
- Enable or disable custom field 2 column

- p. Enable or disable custom field 3 column
- q. Enable or disable custom field 4 column
- r. Enable or disable custom field 5 column

**\*Note: If you enable custom field 1 to 5, the system will show a text box for custom field name.**

- Mapping Setting

Mapping Setting	
GoogleMap Base URL:	http:// <input type="text" value="map.google.com/"/>
MapQuest Base URL:	http:// <input type="text" value="www.mapquest.com/map"/>
Yahoo! Maps Base URL:	http:// <input type="text" value="maps.yahoo.com/maps_r"/>
Show Map Link In Result:	<input checked="" type="checkbox"/>
New Page:	<input checked="" type="checkbox"/>
Map Link Text:	<input type="text" value="Show Map"/>
Active Map Service:	<input type="text" value="Google Map"/>

- a. Enter default Google map base URL.
- b. Enter default MapQuest base URL.
- c. Enter default Yahoo! map base URL.

**\* Note: Please do not include "http://" in the map URL.**

- a. Checked "Show Map Link in Result" to enable map feature
- b. Checked "New Page" if you wish to launch a new window when a user clicks the link for maps and directions
- c. Enter Map Link Text you wish to display at front-end at search results
- d. Use "Active Map Service" to select map service you wish to use

- Miscellaneous Setting

Miscellaneous Setting	
Admin Max Record Per Page:	<input type="text" value="50"/>
Front-End Max Record Per Page:	<input type="text" value="20"/>
Odd Row Color:	<input type="text" value="#FFFFFF"/>
Even Row Color:	<input type="text" value="#FFEEEE"/>
Header Color:	<input type="text" value="#FFEEEE"/>

- a. Enter the maximum number of records per page you wish to display in the Admin Control Panel area
- b. Enter the maximum number of records per page you wish to display in the Front-End area
- c. Define odd row color for grid by hex format
- d. Define even row color for grid by hex format

When you are ready to save your changes, simply click the "Save" button at bottom of page to save your settings to the configuration file.

## 6. Store/Dealer Admin

The Store/Dealer Admin allow you to configure the stores information.

Search Store		Add New Store	
ZIP Code	<input type="text"/>	<input type="button" value="Add Store"/>	
Name	<input type="text"/>		
City	<input type="text"/>		
State	<input type="text"/>		
Country	<input type="text" value="v"/>		
<input type="button" value="Search"/>			

- Search Store
  - a. Fill in search conditions and simply click the "Search" button to get store information.
  - b. After click "Search" button, the result will show as below:

	ZIP Code	Name	Address	City	State	Country	Tel No	Fax No	Email	Web Site	Preferred	Hidden	
<input type="button" value="Edit"/>	78332	Alice-Sagewood Mall	1203 East Main 12345	Alice	TX	US	(361) 664-1521	(361) 664-1521	alice@yahoo.com	www.alice.com	1	0	<input type="button" value="Delete"/>
<input type="button" value="Edit"/>	29407	Charleston-Rittenburg	Rittenburg Bldg S C #100 - 1200 Sam Rittenburg Blvd	Charleston	SC	US	(843) 556-9171				0	0	<input type="button" value="Delete"/>
<input type="button" value="Edit"/>	02129	Charlestown-Bunker Hill	Bunker Hill Mall - 5 Austin St	Charlestown	MA	US	(617) 242-8966				0	0	<input type="button" value="Delete"/>
<input type="button" value="Edit"/>	25414	Charles Town Plz	Charles Town Plz - US 340 & Patrick Henry WY	Town	WV	US	(304) 728-1380				0	0	<input type="button" value="Delete"/>
<input type="button" value="Edit"/>	31740	Charlie's Satellite Sys	130 College St	Cuthbert	GA	US	(229) 732-2294				0	0	<input type="button" value="Delete"/>
<input type="button" value="Edit"/>	31742	Charlie's Satellite Sys	759 Forrester Dr	Dawson	GA	US	(229) 895-9067				0	0	<input type="button" value="Delete"/>
<input type="button" value="Edit"/>	28227	Charlotte Albemarle Crs	Albemarle Crossing - 9020 Albemarle Rd Ste E	Charlotte	NC	MY					0	0	<input type="button" value="Delete"/>
<input type="button" value="Edit"/>	00802	Charlotte Amalie-Nisky	8000 Nisky Shop Ctr #10	Amalie	VI	MY					0	0	<input type="button" value="Delete"/>
<input type="button" value="Edit"/>	29226	Charlotte-Carmel Commons	Carmel Commons Shop Ctr - 7617-C Pineville Matthews	Charlotte	NC	US	(704) 542-9814				0	0	<input type="button" value="Delete"/>
<input type="button" value="Edit"/>	28212	Charlotte-Eastland Mall	Eastland Mall - 5540 Central Ave	Charlotte	NC	US	(704) 537-4932				0	0	<input type="button" value="Delete"/>
<input type="button" value="Edit"/>	28208	Charlotte-Freedom Mart	Freedom Mart Shop Ctr - 3150 Freedom Dr	Charlotte	NC	US	(704) 394-4447				0	0	<input type="button" value="Delete"/>
<input type="button" value="Edit"/>	38375	All City Communications	263 Mulberry Avenue	Selmer	TN	US	(731) 646-8900				0	0	<input type="button" value="Delete"/>
<input type="button" value="Edit"/>	28205	Charlotte-Independence	3732 E Independence Blvd	Charlotte	NC	US	(704) 535-1522				0	0	<input type="button" value="Delete"/>
<input type="button" value="Edit"/>	28212	Charlotte-Independence	Independence S Ctr - 5628 E Independence Blvd	Charlotte	NC	US	(704) 536-1520				0	0	<input type="button" value="Delete"/>

- Add Store
  - a. Click Add Store button
  - b. Fill in the require fields with your desired text and click the "Save" button to save the location to your database.

Store Information	
ZIP Code*	<input type="text"/>
Name*	<input type="text"/>
Address1	<input type="text"/>
Address2	<input type="text"/>
City	<input type="text"/>
State	<input type="text"/>
Country	<input type="text" value="AFGHANISTAN"/>
Tel No	<input type="text"/>
Fax No	<input type="text"/>
Email Address	<input type="text"/>
Web Site	<input type="text"/>
Custom 1	<input type="text"/>
Custom 2	<input type="text"/>
Custom 3	<input type="text"/>
Custom 4	<input type="text"/>
Custom 5	<input type="text"/>
Preferred	<input type="checkbox"/>
Hidden	<input type="checkbox"/>
<input type="button" value="Save"/>	

\* Note: ZIP Code and Name is required fields.

- Edit Store
  - Fill in the search condition you wish to edit and click “Search” button to get store information
  - Click “Edit” button to change store information
  - Fill in store the correct store information click “Save” button to save the location to your database

Store Information	
ZIP Code*	78332
Name*	Alice-Sagewood Mall
Address1	1203 East Main
Address2	12345
City	Alice
State	TX
Country	UNITED STATES
Tel No	(361) 664-1521
Fax No	(361) 664-1521
Email Address	alice@yahoo.com
Web Site	www.alice.com
Custom 1	
Custom 2	
Custom 3	
Custom 4	
Custom 5	
Preferred	<input checked="" type="checkbox"/>
Hidden	<input type="checkbox"/>
Save	

- Delete Store
  - Fill in the search condition you wish to delete and click “Search” button to get store information
  - Click “Delete” button to remove the location from your database

\* Note: Deleting a record from your database can not be undone.

**Tips:** An alternative to Deleting records from your database permanently would be to flag a record as a Hidden record, so it will no longer be displayed in your results pages. This way, you could "unhide" the record at any time. You can flag a record as being hidden, by editing the record and placing a check-mark inside the "Hidden" option.

## 7. Import Stores

- a. If you have an existing database of records/locations you wish to import into ZIPCodeWorld™ .NET Store Locator, it can be done via the Import Stores tool
- b. Click “Browse” button to get your file path
- c. Select either overwrite or append new records
- d. Click “Import” button to process

Import Store Data

File:

**Overwrite**(Delete records in my existing database and create a new database from my import file.)

**Append**(Add my import file to my existing database)

\* It is extremely important that your import file follows the guidelines of our Import File Format. The format is a 'TAB' seperated TXT file.  
\* The format of TAB seperated text file is ZIPCode, Name, Address1, Address2, City, State, Country, Tel No, Fax No, Email, Web Site, Custom1, Custom 2, Custom3, Custom 4, Custom 5, Hidden and Preferal

- Format for Import File

- a. To import a file of locations to your system, you must have a standard text file that has Comma Separated Values (CSV). The file must also contain all the required fields necessary for importing to your Access database. The import file may contain thousands of location records, but they must be one per line.
- b. The easiest way to create your import file is to export your database to a comma delimited file
- c. Each record must contain the following fields (even if a blank field).

**\* Note: The CSV file must contain all 18 fields.**

Column	Max Size	Required	Sample Data
Location Name:	100 Characters	Yes	ZIPCodeWorld.com
Address 1:	255 Characters	No	1901 60th PL
Address 2:	255 Characters	No	Suite 1020
City:	100 Characters	No	Bradenton
State:	100 Characters	No	FL
Country:	100 Characters	No	US
Zip Code:	7 Characters	Yes	34203
Telephone:	15 Characters	No	(604) 12345789
Fax:	15 Characters	No	(604) 12345790
Email:	100 Characters	No	sales@zipcodeworld.com
Website:	255 Characters	No	http://www.zipcodeworld.com
Custom Field 1:	255 Characters	No	Any text
Custom Field 2:	255 Characters	No	Any text
Custom Field 3:	255 Characters	No	Any text
Custom Field 4:	255 Characters	No	Any text
Custom Field 5:	255 Characters	No	Any text
Hidden:	1 Number	Yes	0=Display, 1=Hide
Preferred:	1 Number	Yes	0=No, 1=Yes

## 8. Import ZIPCodeWorld Database

- a. If you want to update new ZIPCodeWorld Database , it can be done via the Import ZIPCodeWorld tool.
- b. Click “Browse” button to get your file path
- c. Click “Upload” button to process

**Database Upload**

File:

**Warning !:** Upload new zip code database file will overwrite your existing database.

This action can not be undone!

It is extremely important that your import file follows the guidelines of our Upload File Format. The format is a ',' separated text file (ends with .csv).

See our Online User Manual for more information about Upload File formats.

Please use caution with this step.

Once again, clicking the button below will **Upload** button your existing zip code table, with the values in your upload file.

\*Note: Upload new zip code database file will overwrite your existing database. This action can not be undone!

- Format for Import File
  - a. To import a file of zip code to your locator system, you must have a standard text file that has Comma Separated Values (CSV). The file must also contain all the required fields necessary for importing to your database. The import file should contain thousands of zip code records, but they must be one per line.
  - b. The easiest way to get your database is through [www.zipcodeworld.com](http://www.zipcodeworld.com) download the latest ZIPCodeWorld database.

\* Note: The CSV file must contain all 3 fields.

Column	Max Size	Required	Sample Data
ZIP_CODE	7 Characters	Yes	00501
LATITUDE	Double	Yes	40.815180
LONGITUDE	Double	Yes	-73.045500

## 9. Program Admin

**User Maintenance**

**Login ID**   
**Password**   
**Is Active** YES

	Login ID	Is Active		
<a href="#">Change Password</a>	admin	Yes		
<a href="#">Change Password</a>	mjc	Yes	<input type="button" value="Disable"/>	<input type="button" value="Delete"/>
1				

If you wish to edit your administrative login information, such as change your username or password, you can click the “Program Admin” link to bring up the user maintenance screen.

- Add User
  - a. Enter Login ID and Password
  - b. Click “Add User” button to add user information to your database

\* **Note:** Login ID and Password is required fields.
  
- Change Password
  - a. Click “Change Password” link
  - b. The system will prompt a new page for enter new password
  - c. Enter new password and new password again
  - d. Click “Change Password” button to save new password to your database

\* **Note:** For security reason, please enter password length 6 or more characters. If possible, please use combination of characters, number, lower case and upper case as your password.
  
- Enable/Disable User
  - a. This feature allows you to active or inactive a user for login.
  - b. If the user is active, a “Disable” button will show.
  - c. If the user is inactive, a “Enable” button will show.

\* **Note:** The user will not able to login, if the “Is Active” status is “No”

\*\* **Note:** You are not allowed to disable “admin” (default user).
  
- Delete User
  - a. This feature allows you delete user permanently.
  - b. Click “Delete” button to remove from your database.

\* **Note:** Deleting a record from your database can not be undone.

\* **Note:** You are not allowed to delete “admin” (default user)

## **PURCHASE LICENSE**

### **License Agreement**

A license is required for each machine the product is installed on, including development or staging machines. Please refer to the end of this document for the complete license agreement.

### **Purchase Instruction**

Proceed to our order page. Fill out the online form and choose the correct number of licenses. Once your order has been approved, you will receive your license file (License.Key) immediately through email. Save the license file to the same directory as StoreLocator.dll in /bin directory for WebForm to register the component and remove the limitations in unregistered version.

Please visit <http://www.zipcodeworld.com> for online registration 24 x 7.

## **UPGRADE**

### **Upgrade Latitude and Longitude Database**

The ZIPCodeWorld™ .NET Store Locator Control depends to an internal database to calculate the distance by using the latitude and longitude. All users with active license will be allowed to download the monthly updates from the ZIPCodeWorld™ download area within subscription period.

To update, users need to drop or replace the database with the latest one from the download area. The store locator program will use the latest database once the local copy has been updated. Please refer to the welcome email for more information regarding download updates and account information.

## **ZIPCODEWORLD™ .NET STORE LOCATOR LICENSE AGREEMENT**

### **IMPORTANT-READ CAREFULLY:**

This License Agreement is a legal agreement between you (either an individual or a single entity) and Hexasoft Development Sdn. Bhd., owner of IP2Location™ trademark, ("HEXASOFT" or "we") for the HEXASOFT developed ZIPCodeWorld™ .NET Store Locator (hereafter referred to as the SOFTWARE PRODUCT) accompanying this License Agreement, which includes web service routines and data result(s). By exercising your rights to make and use copies of the SOFTWARE PRODUCT, you agree to be bound by the terms of this License Agreement. If you do not agree to the terms of this License Agreement, you may not use the SOFTWARE PRODUCT.

### **GRANT OF LICENSE.**

This License Agreement grants the following rights: You are granted the right to use the SOFTWARE PRODUCT files on one computer in the Internet or Local Area Network ("LAN"). You may not use the SOFTWARE PRODUCT files on multiple computers without matching number of licenses.

### **DESCRIPTION OF LIMITATIONS.**

You may not reverse engineer except and only to the extent that such activity is expressly permitted by applicable law notwithstanding this limitation. Without prejudice to any other rights, HEXASOFT may terminate this License Agreement if you fail to comply with the terms and conditions of this License Agreement. In such event, you must destroy all copies of the SOFTWARE PRODUCT and all of its parts.

### **COPYRIGHT.**

All title and copyrights in and to the SOFTWARE PRODUCT and any copies of the SOFTWARE PRODUCT are owned by HEXASOFT. The SOFTWARE PRODUCT is protected by copyright laws and international treaty provisions.

### **NO WARRANTIES.**

HEXASOFT expressly disclaims any warranty for the SOFTWARE PRODUCT. The SOFTWARE PRODUCT and any related documentation is provided "as is" without warranty of any kind, either express or implied, including, without limitation, the implied warranties of merchantability or fitness for a particular purpose. The entire risk arising out of use or performance of the SOFTWARE PRODUCT remains with you.

**LIMITATION OF LIABILITY.**

HEXASOFT's entire liability and your exclusive remedy under this Agreement shall not exceed fifteen dollars (US \$15.00).

**NO LIABILITY FOR CONSEQUENTIAL DAMAGES.**

In no event shall HEXASOFT nor anyone else who has been involved in the creation, production, or delivery of the SOFTWARE PRODUCT be liable for any damages whatsoever (including, without limitation, damages for loss of business profits, business interruption, loss of business information, or any other pecuniary loss) arising out of the use of or inability to use this HEXASOFT product, even if HEXASOFT has been advised of the possibility of such damages. Because some states and jurisdictions do not allow the exclusion or limitation of liability for consequential or incidental damages, the above limitation may not apply to you.

**MISCELLANEOUS**

"ZIPCodeWorld" is a trademark of Hexasoft Development Sdn. Bhd..

"Microsoft" is a registered trademark of Microsoft Corporation.

"Windows" is a registered trademark of Microsoft Corporation.

All other trademarks are the property of their respective owners.